

Grafton Greyhound Racing Club 5 Year Business Plan



WHO WE ARE

Established in 1913 as the Clarence River Coursing Club, our first meeting was held on the original site at Carrs Creek on the 7th May 1913.

The Club moved to the current site in Cranworth Street in 1933 and the first meeting was held on 1st April 1933.

In 1937 the clubs name was changed to the Grafton Greyhound Racing Club and has continued to conduct the July Racing Carnival along with NON TAB & TAB meetings annually in conjunction with the Clarence River Racing Club to this date.

On 10th August 1983 the Club was incorporated as the Grafton Greyhound Racing Club Limited.

OUR CHARTER

Is to provide Greyhound Racing on our premises situated in Cranworth Street, Grafton under licence granted by Greyhound Racing NSW, this includes setting race dates, programming, funding of prize money, providing a safe racing surface for greyhounds and ensuring facilities are provided for spectators that are both modern and well maintained.

OUR MISSION

To update facilities, to increase prize money when applicable, to further develop secondary industry and to ensure the Club continues to provide a viable and vibrant venue for Greyhound Racing into future years.



EXECUTIVE SUMMARY

With the ongoing emphasis on animal welfare coupled with the close scrutiny of our industry from outside parties the Grafton Greyhound Racing Club (GGRC) is looking towards the future for greyhound racing in the Northern Rivers area of NSW and has a stated ambition to be the prominent greyhound racing track & facilities within the Region.

We are in the extremely fortunate position of having a high level of local community support & feel that this area is the **heartland** of Regional Greyhound Racing in NSW. We have a local State MP who actually crossed the floor against his leader & party over the Greyhound ban proposition & his support of our Club during that time further enhanced our ground support. Given our location we are in a prime position to serve the Tweed, Lismore, Casino, Armidale & Kempsey areas as all are within a few hour's drive of us and makes this an important area for any GRNSW strategy going forward.

To that end we are looking very closely at providing members & industry participants with the complete package by providing facilities which will include not only a safe well-maintained racing track but also the establishment of a Greyhound Racing Centre of Excellence.

Complementing our regular race meetings & our weekly slipping, box & finish on trials the Centre will provide facilities for the early education of young Greyhounds with two x 60m slipping tracks & an indoor swimming pool to provide stress free conditioning & rehabilitation work. To provide a one stop shop for trainers we would also include viewing kennels for young dogs so they become familiar with the sites & sounds of the racing environment.

To round out the Centre of Excellence we would recommend the inclusion of an onsite veterinary surgeon. Given the scope of what we are looking to achieve with our vision the onsite veterinary surgeon could be either available full or part time and could potentially include AI & berthing options to provide the full range of services. The most logical person to fill this role would be the GRNSW appointed Regional Vet who currently oversees the three local race meetings (Grafton, Casino & Lismore)

The other key aspect of our vision is to have the safest greyhound racing track possible. This would necessitate making an alteration to the top turn of our existing track layout which will provide safer entry & egress on this bend. As Greyhounds get stronger & faster it is imperative that the industries governing body recognises and most importantly acts on this by working with Clubs to ensure optimal safety & welfare for the racing Greyhounds.

Our long range strategic planning also includes the upgrading of the on-track facilities. The current buildings are run down and while they serve a purpose they do not support our initiative to be the premier race facility in the Northern Rivers. We have begun the process of engaging architects to provide options as to how the current buildings could be modified & modernised & there are a number of key factors for us to consider. The key consideration is future proofing ourselves for both growth & longevity. This means having the ability to provide our patrons & community with modern entertainment facilities. To this end we envisage relocating all downstairs activity including the club's office, the kitchen, dining, bar & totaliser facilities to the upstairs area. To achieve this would require extending & refurbishing our existing upstairs area.

Aligned to this goal & to ensure we continue to provide a high level of supplementary income from our Caravan Park there is a reasonably urgent need to refurbish or replace our existing toilet, shower & laundry amenities. These were constructed not long after the course was created in 1935 & have undergone additions & repairs & are simply unsatisfactory.

Naturally the extent of these projects is large & will come at significant cost which is beyond our capacity to fund on our own. Therefore, **we seek a commitment from GRNSW** to partner with us to develop & implement these plans as a joint venture. The joint project would provide a facility which would be a real showpiece for the Northern Rivers & surrounding areas and provide GRNSW with an International class complex which would be a first of its kind & would become the benchmark for future Greyhound Industry initiatives.



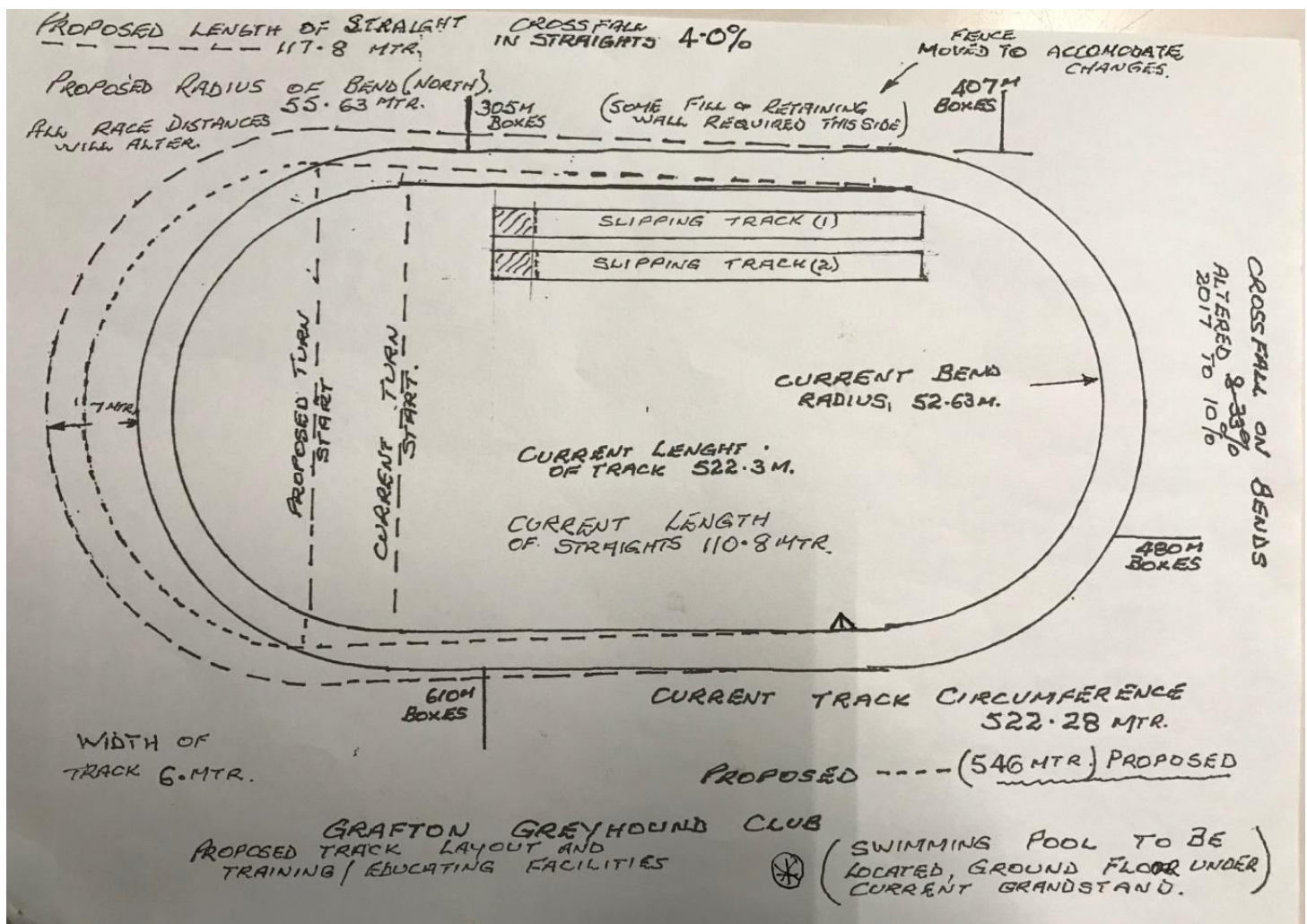
5 YEAR DEVELOPMENT PLAN

Year 1

- Alter the track to overcome safety concerns & improve overall racing conditions for the Greyhounds. The focus of this would be the top turn (north).

Working with Industry experts & UTS we propose that our track be altered as per the below image which would require;

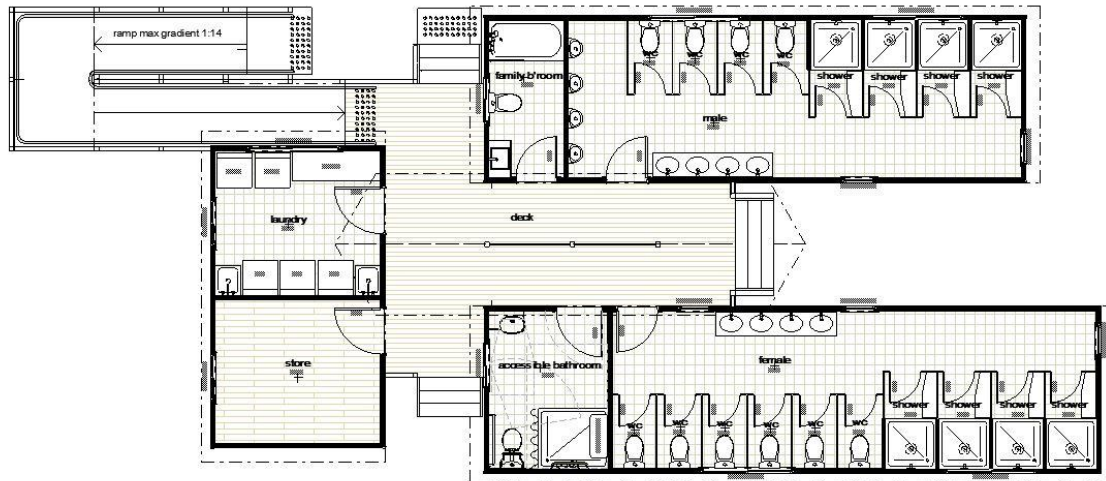
- Moving the point at which the northern bend starts & finishes by approx. 7m
- Lengthening both straights from 110.8m to 117.8m & increasing the radius of the turn
- Change current track circumference from 522.28m to 546m
- Addition of extra safety padding to the full circumference of the bend
- All race distances would need to alter providing improved stake money opportunity
- To provide trainers with young pup education, strength & conditioning facilities within a controlled racing environment. Construct two new slipping tracks in the centre of the track. These would be approx. 60m long. These will support the young greyhound trialling programme which is currently in place
- The construction of viewing kennels for the education of young pups in a controlled racing environment



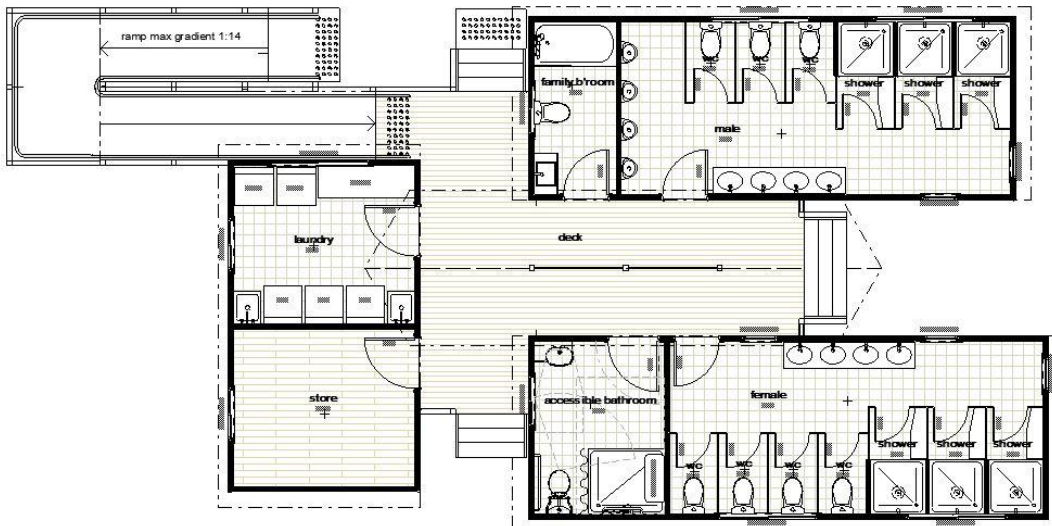
Year 2

- Upgrade / rebuild shower, toilet & laundry facilities to provide industry participants, racing patrons & caravan park users with modern clean functional amenities.
 - We have determined the optimal location for a new amenities block
 - We have obtained a full plan & quotation as per below image (approx. \$400k)
 - We are currently in the process of obtaining a second quote

Option A

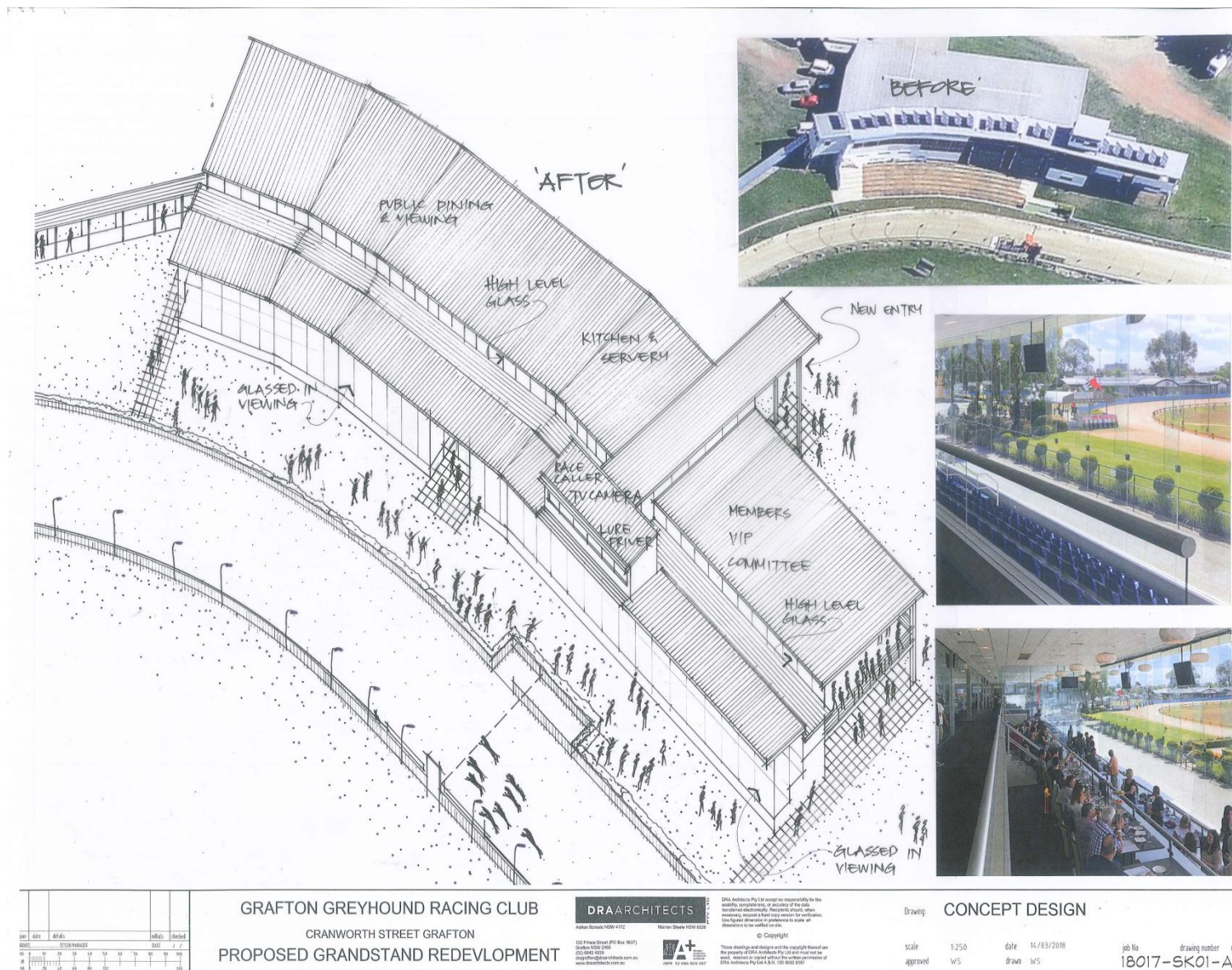


Option B



Year 3 & 4

- Complete extensions & refurbishment of upstairs area to provide kitchen, dining, bar, tote, viewing & office areas
 - Aim to provide flood free location for all race day patron & function facilities
 - Ability to provide supplementary income through the hiring of facility for functions
 - Includes relocating the lure driving tower & upgrading judges box & media facilities
 - We have engaged a local architect to develop initial plans & conceptions as below
- Complete construction of ground floor swimming pool for use by trainers as an aid for stress free conditioning & rehabilitation work



Year 5

- Examine & develop the opportunity to use the existing vet facilities to house a full time or part time veterinary surgeon service. Along with the regular treatment of injuries the service could extend to AI & birthing procedures. There would also be the opportunity to provide regular workshops to assist with the development & education of trainers & handlers on a wide range of injury prevention, injury treatment, greyhound welfare & general animal health topics. This would support the ongoing work by GRNSW to be proactive & visible in the area of greyhound health & well being

